

OPTIMIZING PATELLAR IMPLANT POSITIONING IN TKA

*Jean-Noël Argenson, Matthieu Ollivier,
Xavier Flecher, Sebastien Parratte*

Institute for Locomotion and Center for Arthritis
Surgery

Sainte Marguerite Hospital, Marseille, France



Institut du Mouvement et de l'appareil Locomoteur



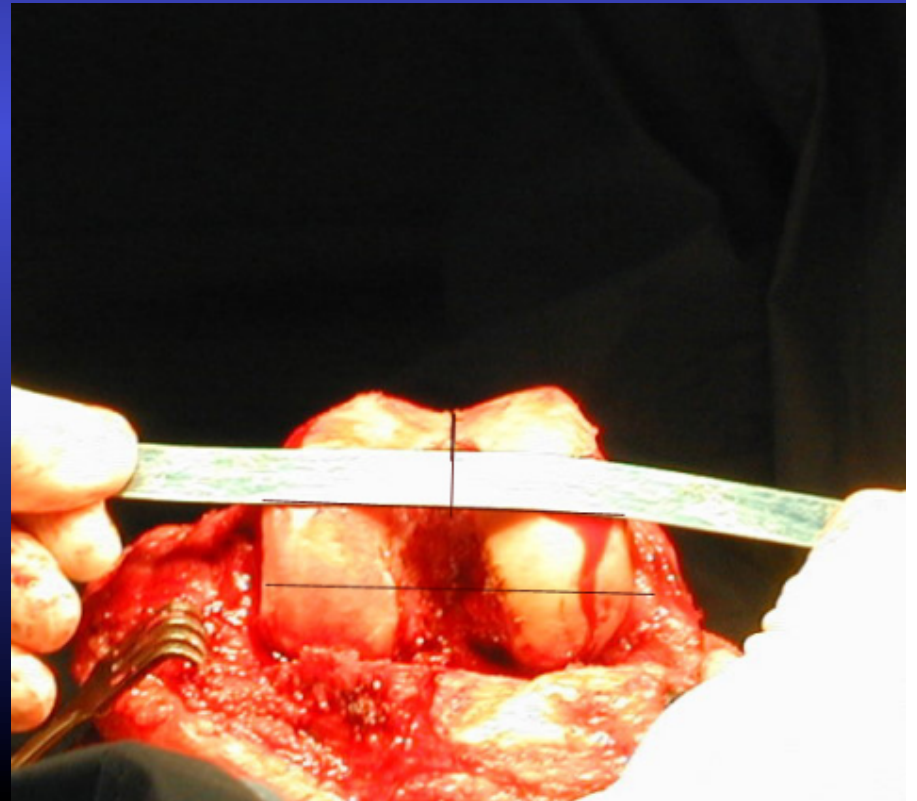
The problems

- Most of randomized and non randomized studies have shown that unresurfaced patella have a higher rate of anterior knee pain, range 4 to 28%
- About 10% of unresurfaced patella will require late resurfacing
- Anterior knee pain will be present whether or not the patella is resurfaced, range 5 to 10%
- Patient selection for considering resurfacing or not the patella is unpredictable



The facts

- With well-aligned, cemented, all poly patellar component
- With careful attention to component alignment, specially in rotation
- The rate of patellofemoral complications has now been significantly reduced, range 1 to 5%

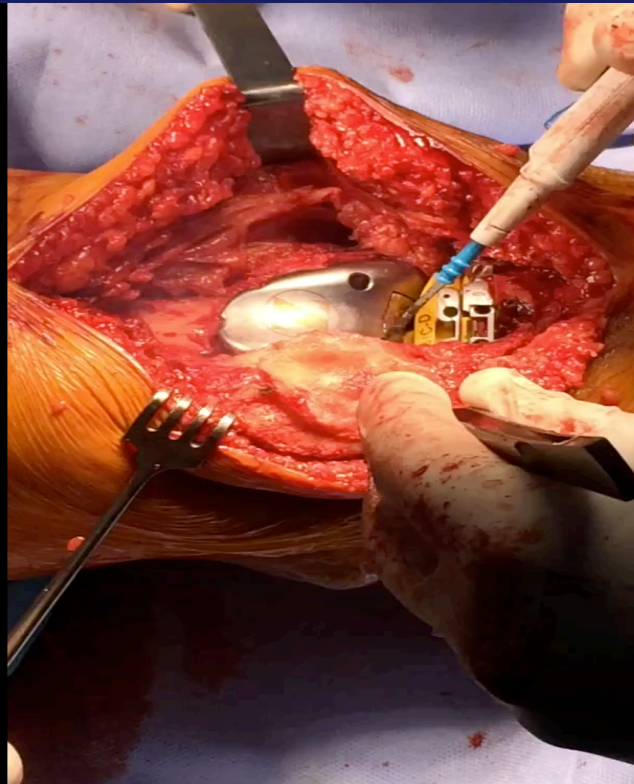


Factors affecting anterior knee pain

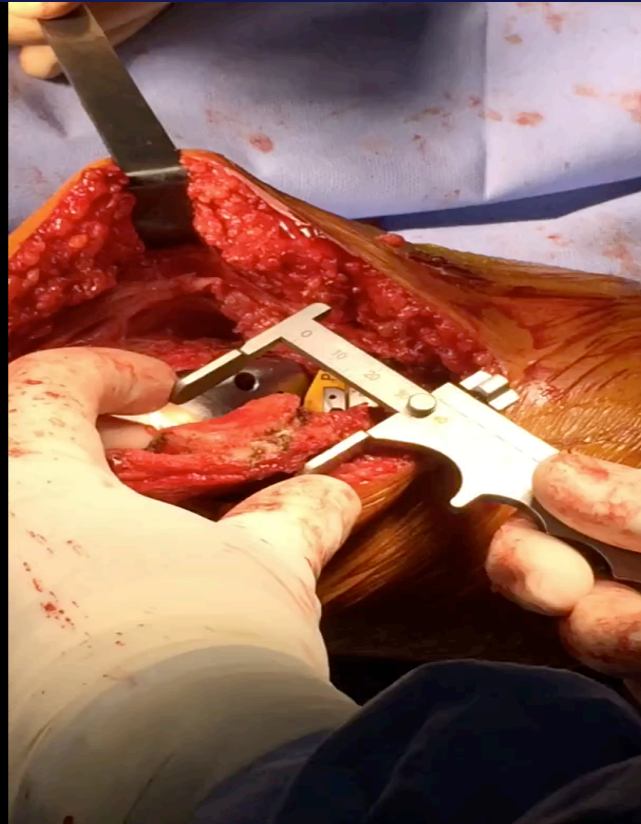
- Patellofemoral congruity i.e. trochlear groove design
- Patellar tracking i.e. patellar position
femoral rotation
femorotibial orientation



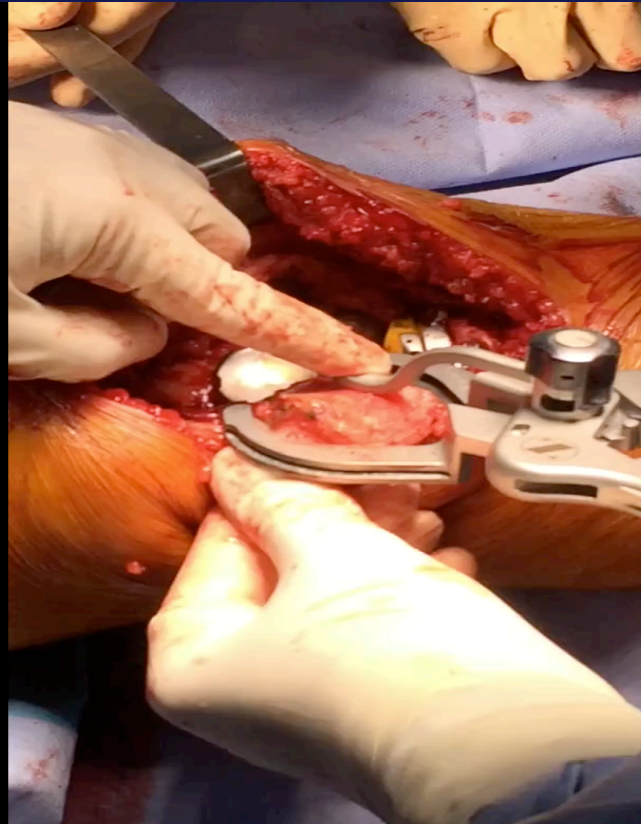
Exposing the Patella



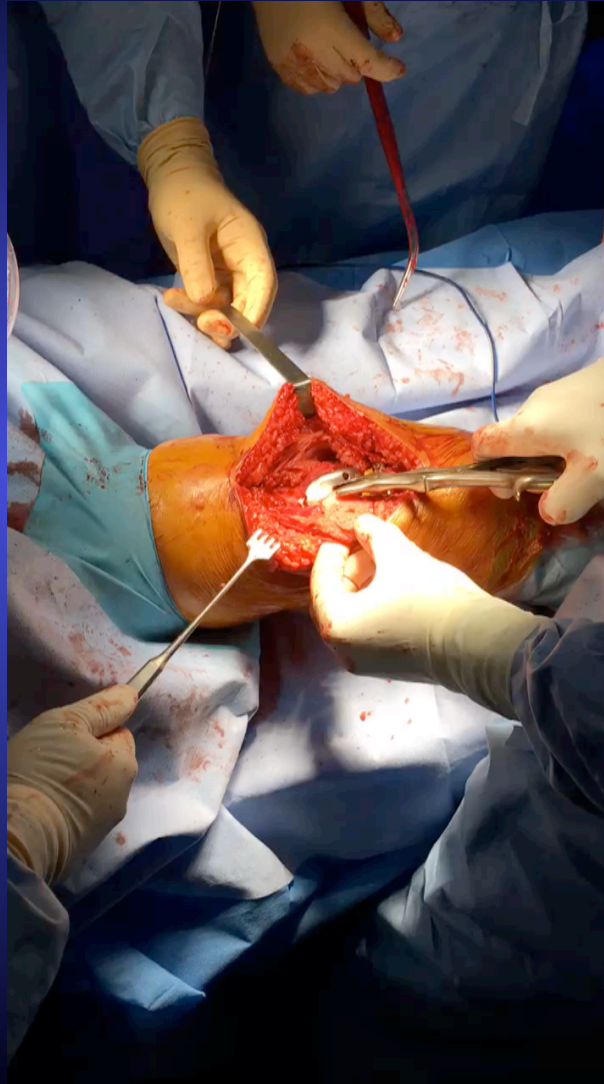
Evaluating Patella Thickness



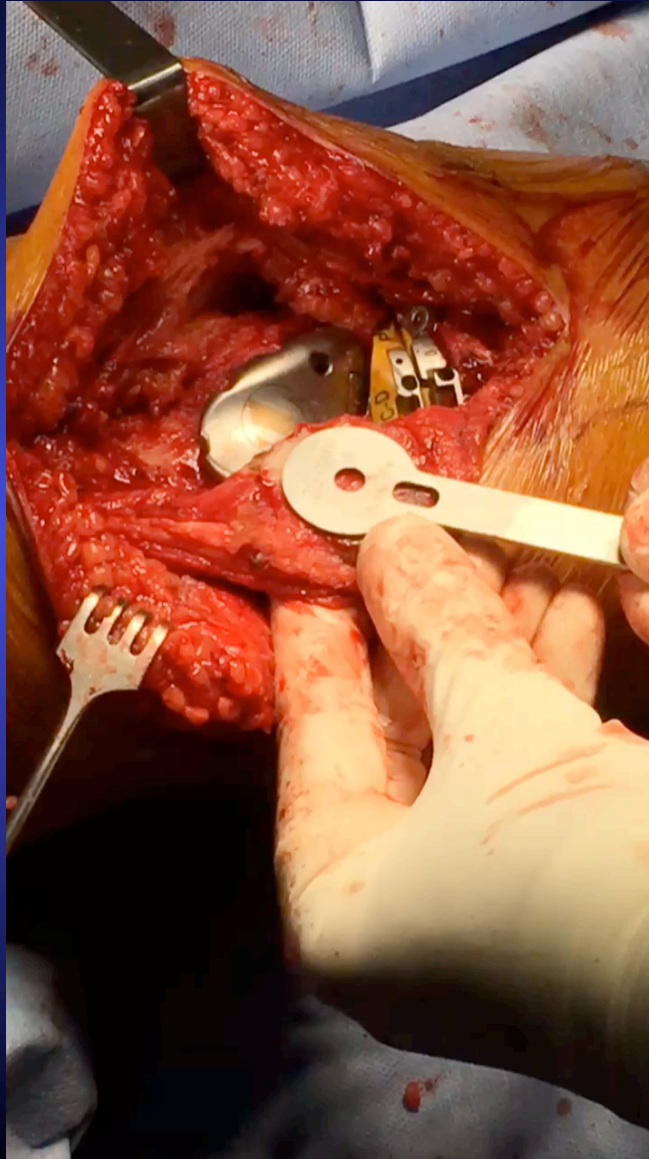
Restoring Patella Thickness



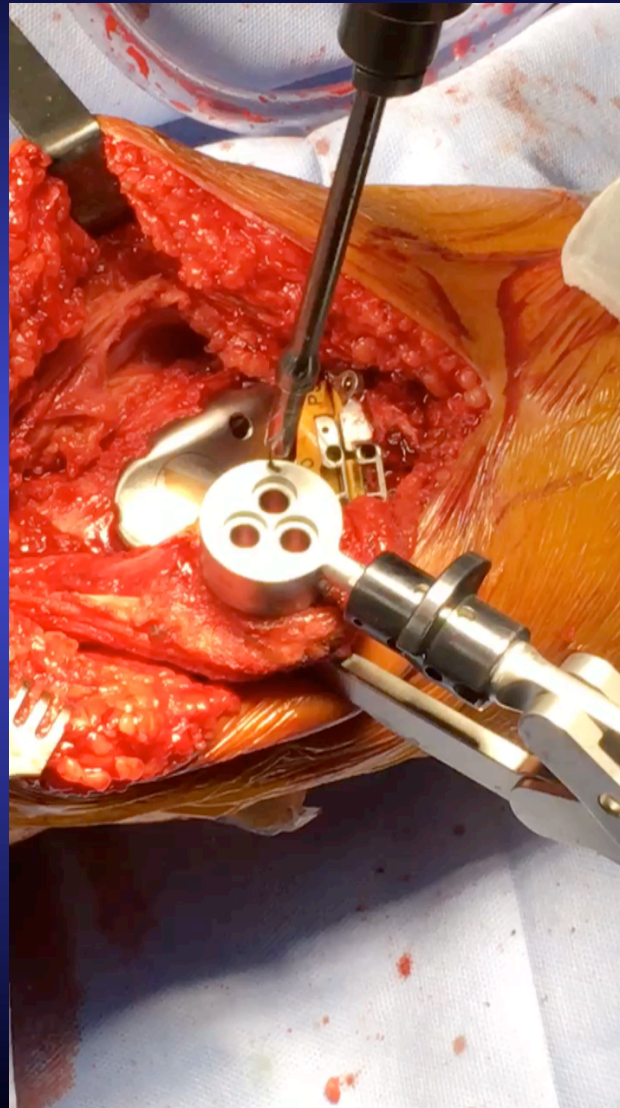
Avoiding Facet Impingement



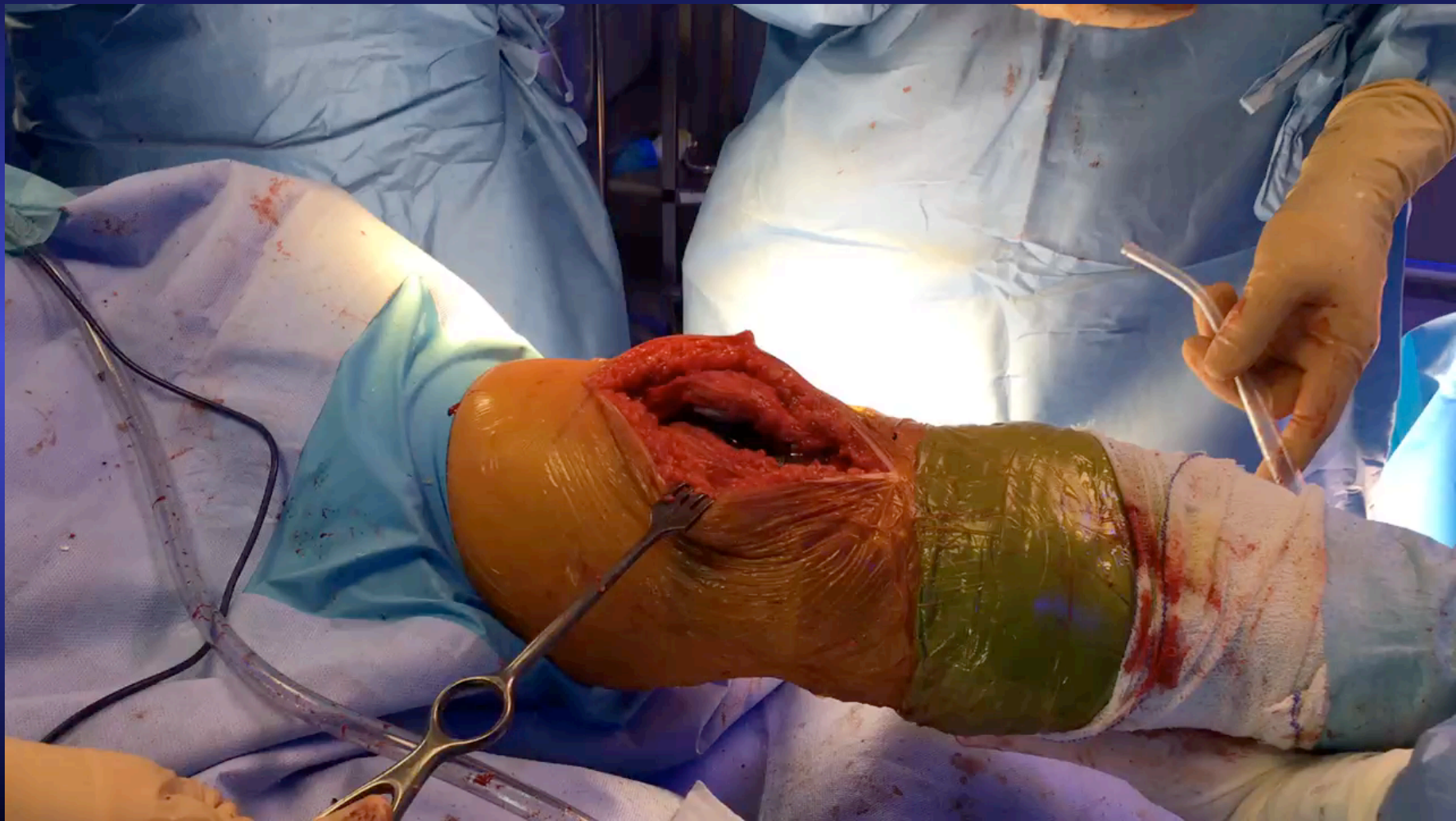
Sizing and Positioning



Fixing the Position



Checking Patella Tracking



CONCLUSION

- Restore thickness
- Choose best coverage
- Avoid facet impingement
- Medialize, Elevate

